

ALL YOU NEED TO KNOW ABOUT Following Too Closely

What does Georgia law say about Following Too Closely?
What are some examples?

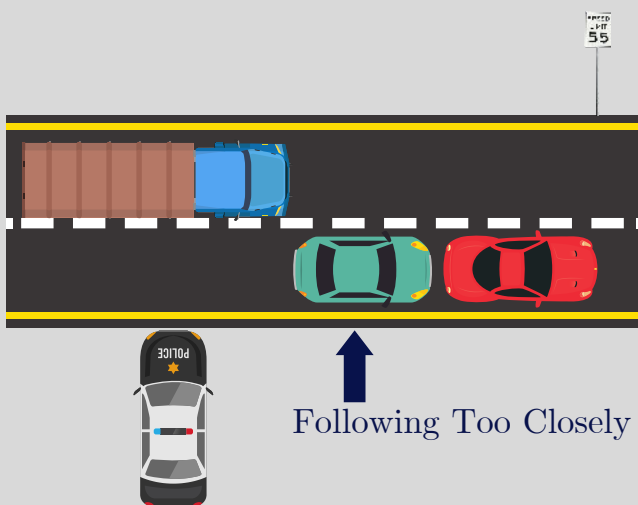


Fast Facts

Code Section: O.C.G.A. §40-6-49
Misdemeanor Offense
3-Points on License After Conviction

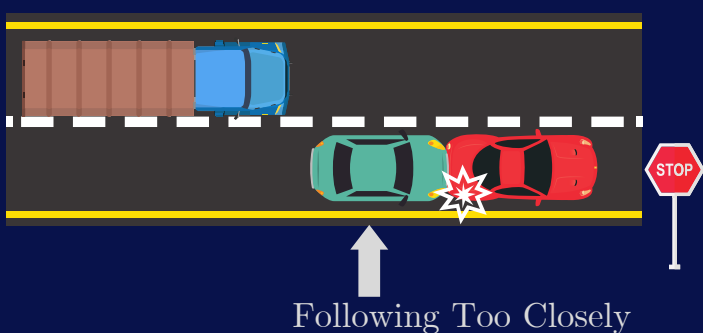
O.C.G.A. § 40-6-49

In general, it forbids drivers from following other vehicles "more closely than is reasonable and prudent," considering the speed of the vehicles, the other traffic on the road, and the condition of the highway. There are a few other rules in the statute, and some exceptions, so be sure to read the whole article.



Example #1

Following Too Closely can be used to charge drivers who are caught tailgating other drivers.



Example #2

Drivers are often charged with Following Too Closely after rear-ending another driver, the assumption being that they must have been driving too closely to the front driver if they hit them.

LAW OFFICE OF
KEVIN R. FISHER

